



AS-18

A Free Choice Supplement For Sheep, Goats, Equines and Cattle on Pasture

THE PRODUCT

AS-18 supplement is designed to be fed to sheep, grazing cattle, horses and goats. This unique supplement is second to none when compared to other blocks. It is the product of a state-of-the-art patented process that provides a unique 24-hour feeding system. **AS-18** supplement is an exceptionally dense block that will give you the most for your money. Here's how:

- ✓ **Economical:** A low cattle feeding rate of 0.75 lb/head daily means lower feeding costs (on a per head per day basis).
- ✓ **Weather Resistant:** The patented, "continuous flow" system creates a quality, low-moisture, exceptionally dense block that maintains its integrity even in hot, humid weather or precipitation.
- ✓ **Minimal Labor:** **AS-18** supplement is easy to feed. Simply place the block in areas of easy access to the livestock.
- ✓ **Returnable Steel Tubs** are economical and environmentally friendly.

NATURAL PROTEIN

AS-18 supplement may be fed safely to all classes of livestock. Supplemental protein and other nutrients help promote forage utilization to improve performance.

MAY BE FED TO SHEEP & GOATS

AS-18 supplement is safe for all livestock. Sheep or goats will typically consume 3 to 4 ounces per head per day.

VITAMINS & MINERALS

Based on 0.75 lb intake, **AS-18** supplement is fortified with vitamin A and mineral.

Here are some of the reasons why vitamin A and minerals supplied by **AS-18** are necessary for optimum herd health and performance.

- ✓ **Copper** is required for reproductive performance. A significant symptom of copper deficiency includes delayed or suppressed estrus, along with reduced growth rate, fragile bones, anemia, steely wool and sway back in lambs.
- ✓ **Manganese** is a necessary element of bone growth and skeletal development, as well as reproduction. Skeletal abnormalities such as weak bones and stiff joints are signs of deficiency, as well as poor reproductive performance and reduced conception rates in older cattle.
- ✓ **Potassium** is a critical component of electrolyte balance in the body. Potassium assists kidneys in maintaining the water balance, muscle contractions (including heart muscle function) and nerve impulse transmission. Forages tend to be excellent sources of potassium, with the best sources coming from early spring pastures that have not yet reached maturity.
- ✓ **Selenium** is necessary for tissue repair, normal function of the immune system, and reproductive performance. Selenium is interactive with vitamin E. A diet low in vitamin E may require an increase in selenium supplementation. A common symptom of deficiency is white muscle disease in young cattle characterized by lameness, stiffness, or cardiac failure.
- ✓ **Vitamin A** is required for growth, reproduction and maintenance; **vitamin D** affects calcium and phosphorus utilization and **vitamin E** helps to increase immune system function as well as interaction with the functions of selenium.
- ✓ **Zinc** is essential in the function of numerous enzymes. It is also needed for normal development and functioning of the immune system. Research has also shown that zinc is a requirement of the reproductive system. Stiff joints, skin lesions, reduced testicular growth, delayed puberty and abnormal estrus may be signs of a zinc deficiency.

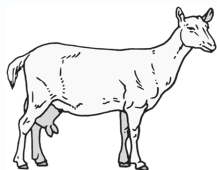
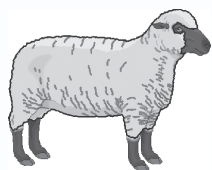


FEEDING DIRECTIONS

AS-18

Provide free choice as a supplement to pasture cattle, and horses at the rate of one block for each 15 to 25 head and to sheep or goats at a rate of one block for each 25 to 35 head. Place a minimum of two blocks in each pasture near areas frequented by livestock, such as watering locations, shade or loafing areas. Cattle normally consume approximately 0.5 to 1.0 pound per head daily. Sheep normally consume approximately 3 to 4 ounces per head per day. Mature horses will typically consume 1 to 3 pounds per head daily. Consumption may vary depending on climate, grazing conditions, condition of livestock and/or availability of other feeds. In situations where climate and/or other factors result in consumption less than expected, intake of supplement can be increased by providing additional blocks per pasture.

Provide access to fresh water and free-choice salt at all times.



GUARANTEED ANALYSIS

Crude Protein, minimum	18.0%	Cobalt, minimum	2 ppm
Crude Fat, minimum	4.0%	Iodine, minimum	10 ppm
Crude Fiber, maximum	2.0%	Manganese, minimum	800 ppm
Calcium, minimum	0.9%	Selenium, minimum	2.0 ppm
Calcium, maximum	1.2%	Zinc, minimum	800 ppm
Phosphorus, minimum	1.0%	Vitamin A, minimum	50,000 IU/lb
Potassium, minimum	2.5%	Vitamin D, minimum	5,000 IU/lb
Magnesium, minimum	0.5%	Vitamin E, minimum	50 IU/lb
Copper, minimum	15 ppm		
Copper, maximum	50 ppm		

Manufactured By:

Animal Feed Supplement, Inc.

101 Roanoke Avenue

Poteau, Oklahoma 74953

Phone: 800-722-4957

www.feedinadrum.com

CAUTION: Use as directed. Observe livestock and monitor intake daily.

10.07.2010

