



DAIRY DRYLic® LS

A Free Choice Supplement for Non-Lactating Dairy Cattle

THE PRODUCT

DAIRY DRYLic® LS is carefully formulated for non-lactating dairy cattle. It is essential for maintenance during pregnancy and preparation for calving. This unique supplement is second to none when compared to other low-moisture blocks. This block is the product of a state-of-the-art patented process that provides a unique 24-hour feeding system. **DAIRY DRYLic® LS** is an exceptionally dense block that will give you the most for your money. Here's how:

- ✓ **Economical:** A low feeding rate of 0.75 lb/head daily means lower feeding costs (on a per head per day basis).
- ✓ **High Mineral Fortification:** This supplement is mineral and vitamin fortified eliminating the need for additional free-choice minerals, resulting in typical supplemental feed cost savings of 5¢ to 8¢ per head per day.
- ✓ **Weather Resistant:** The patented, "continuous flow" system creates a low-moisture, exceptionally dense block that maintains its integrity even in hot, humid weather or precipitation.
- ✓ **Minimal Labor:** **DAIRY DRYLic® LS** is easy to feed. Simply place the block in areas of easy access to cattle.
- ✓ **Returnable Steel Tubs** are self contained supplement feeders that are environmentally friendly and eliminate the expense of additional feeding equipment.

FEATURES OF DAIRY DRYLic® LS

DAIRY DRYLic® LS is an important addition to the diet of non-lactating, pregnant dairy cattle. This supplement contains up to 200% of the new NRC nutrient requirements for trace minerals and is highly fortified with vitamins A, D and E. Some of the outstanding features of **DAIRY DRYLic® LS** include:

- ✓ **Higher levels of vitamin E and selenium** help reduce duration of mastitis and are known to help prevent mastitis and incidences of retained placentas as parturition nears.
- ✓ **Calcium and phosphorus** increase bone density and strength, especially during the latter part of gestation, when most mineral deposition occurs, as well as reducing the risk of milk fever in early lactation.
- ✓ **No salt added**, which helps prevent edema before parturition.

VITAMINS & MINERALS IN DAIRY DRYLic® LS

Below are some of the reasons why vitamins and minerals supplied by **DAIRY DRYLic® LS** are necessary for optimum herd health and performance.

- ✓ **Copper** is required for reproductive performance. A significant symptom of copper deficiency includes delayed or suppressed estrus, along with reduced growth rate, fragile bones and anemia.
- ✓ **Zinc** is essential in the function of numerous enzymes. It is also needed for normal development and functioning of the immune system. Research has also shown that zinc is a requirement of the reproductive system. Stiff joints, skin lesions, reduced testicular growth, delayed puberty and abnormal estrus may be signs of a zinc deficiency.
- ✓ **Manganese** is a necessary element of bone growth and skeletal development, as well as reproduction. Skeletal abnormalities such as weak bones and stiff joints are signs of deficiency, as well as poor reproductive performance and reduced conception rates in older cattle.
- ✓ **Potassium** is a critical component of electrolyte balance in the body. Potassium assists kidneys in maintaining the water balance, muscle contractions (including heart muscle function) and nerve impulse transmission. Forages tend to be excellent sources of potassium, with the best sources coming from early spring pastures that have not yet reached maturity.
- ✓ **Selenium** is necessary for tissue repair, normal function of the immune system, and reproductive performance. Selenium is interactive with vitamin E, and a diet low in vitamin E may require an increase in selenium supplementation. A common symptom of deficiency is white muscle disease in young cattle characterized by lameness, stiffness, or cardiac failure.
- ✓ **Vitamin A** is required for growth, reproduction and maintenance; **vitamin D** affects calcium and phosphorus utilization and **vitamin E** helps to increase immune system function as well as interaction with the functions of selenium. Vitamin E plays a vital role in the prevention of mastitis.

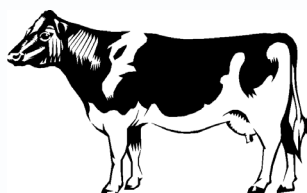


FEEDING DIRECTIONS

DAIRY DRYLic® LS

Provide free choice as a supplement to non-lactating dairy cattle at the rate of one block for each 10 to 15 head. Place blocks in each lot or pasture near areas frequented by livestock, such as watering locations, shade or loafing areas. Cattle normally consume approximately 0.75 pound per head daily. Consumption may vary depending on climate, grazing conditions, condition of livestock and/or availability of other feeds. In situations where climate and/or other factors result in consumption less than 0.75 lb per head daily, intake of supplement can be increased by providing additional blocks per pasture or lot. Provide access to fresh water at all times.

Limit salt intake to no more than 1 ounce per head daily.



Include **THE FEED IN A DRUM® RANGE 30 MF** in your Replacement Heifer program. **THE FEED IN A DRUM® RANGE 30 MF** is performance fortified with essential nutrients to support growth, reproductive performance and forage utilization.

GUARANTEED ANALYSIS

Crude Protein, minimum	16.0%*	Copper, minimum.....	600 ppm
Crude Fat, minimum	4.0%	Iodine, minimum.....	30 ppm
Crude Fiber, maximum	2.0%	Manganese, minimum.....	2,400 ppm
ADF, maximum.....	2.0%	Selenium, minimum	8.8 ppm
Calcium, minimum	0.7%	Zinc, minimum.....	2,400 ppm
Calcium, maximum.....	1.2%	Vitamin A, minimum.....	135,000 IU/lb
Phosphorus, minimum	2.9%	Vitamin D, minimum	27,000 IU/lb
Potassium, minimum	2.5%	Vitamin E, minimum.....	1,350 IU/lb
Cobalt, minimum	6.0 ppm		

*Including not more than 8% equivalent crude protein as non-protein nitrogen.

Manufactured By:

Animal Feed Supplement, Inc.

101 Roanoke Avenue

Poteau, Oklahoma 74953

Phone: 800-722-4957

www.feedinadrum.com

CAUTION: Use as directed. Observe livestock and monitor intake daily.

04.29.2010

