



GOAT 20 N

A Free Choice Supplement for all Classes of Goats

THE PRODUCT

GOAT 20 N is designed to be fed to goats producing meat, milk and hair. This unique supplement not only supplies protein, minerals and vitamins, but also increases the total amount of energy goats get from every pound of feed consumed. This block is the product of a state-of-the-art patented manufacturing process that provides a unique 24-hour feed delivery system.

GOAT 20 N is an exceptionally nutrient-dense block that will maximize performance and profitability. Here's how:

- ✓ **Economical:** A low feeding rate of 2 to 4 ounces per head per day means lower feeding costs (on a per head per day basis).
- ✓ **Weather Resistant:** The patented, "continuous flow" system creates a low-moisture, exceptionally dense block that maintains its integrity even in hot, humid weather or precipitation.
- ✓ **Minimal Labor:** **GOAT 20 N** is easy to feed. Simply place the blocks in areas of easy access to the goats.
- ✓ **Available in 60 lb and 125 lb Tubs:** The 125 lb steel tubs are returnable and environmentally friendly.

DOES NOT CONTAIN NON-PROTEIN NITROGEN

When an all-natural, all-vegetable protein is desired for your goats, **GOAT 20 N** is the smart choice!

GOAT 20 N contains only natural vegetable protein sources – no animal proteins.

GOAT 20 N is recommended when ammonia-treated forages are part of the diet.

GOAT 20 N is ideal for:

- Growing goats
- Doe goats during the last trimester of pregnancy and lactation
- Goats fed poor quality forages
- Maximizing hair production



GOAT 20 N provides fermentable carbohydrates that optimize rumen fermentation – fueling rumen microbes to maximize the digestion of the rest of the diet.

By providing these "safe" but fermentable carbohydrates and increasing microbial digestion, more microbial protein is produced, yielding high quality protein for milk, hair and meat production and high fertility.

GOAT 20 N is highly fortified with vitamins and minerals. Listed below are reasons why these minerals and vitamins are necessary for optimum health and performance in goats.

- ✓ **Copper** is required for optimal growth and reproductive performance. Symptoms of copper deficiency include delayed or suppressed estrus, reduced growth rate, fragile bones and anemia.
- ✓ **Manganese** is essential for proper skeletal development and, reproductive performance. Signs of a manganese deficiency are reduced conception rates.
- ✓ **Zinc** is required for proper enzyme function, and the development of functional immune and reproductive systems. Stiff joints, skin lesions, reduced testicular growth; delayed puberty and abnormal estrus are potential symptoms of a zinc deficiency in breeding goats.
- ✓ **Potassium** is a critical component of electrolyte balance in the body. Potassium is essential in maintaining water balance, muscle contractions (including heart muscle function), nerve impulse transmission and for maximal feed intake and subsequent growth and milk production.
- ✓ **Selenium** is necessary for tissue repair, normal function of the immune system and optimal reproductive performance. Selenium and Vitamin E work together; selenium helps spare Vitamin E levels in the diet. A common symptom of selenium deficiency is white muscle disease in young goats characterized by lameness, stiffness and cardiac failure.
- ✓ **Vitamin A** is required for maintenance, growth and reproduction; vitamin D affects calcium and phosphorus utilization, and vitamin E helps to increase immune system function and reproduction.

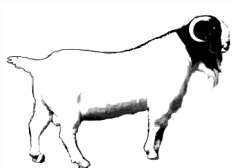
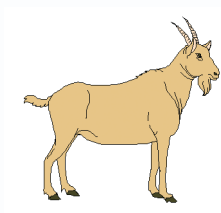


FEEDING DIRECTIONS

Goat 20 N

Provide free-choice as a supplement to all classes of goats. Feed at a rate of one block per 15 to 30 head. Place blocks in each pasture or paddock near areas frequented by goats, such as water, shade or loafing areas. Goats normally consume between 2 and 4 ounces per head daily. Consumption may vary depending on climate, browsing/grazing conditions, and availability of other feeds. In situations where consumption is less than 2 ounces, intake can be increased by providing additional blocks in each pasture.

Provide access to fresh water and free-choice salt at all times.



GUARANTEED ANALYSIS

Crude Protein, minimum	20.0%	Copper, minimum.....	150 ppm
Crude Fat, minimum	4.0%	Iodine, minimum.....	7.0 ppm
Crude Fiber, maximum	2.5%	Manganese, minimum.....	600 ppm
Calcium, minimum	1.5%	Selenium, added.....	4.4 ppm
Calcium, maximum.....	2.0%	Zinc, minimum.....	600 ppm
Phosphorus, minimum	1.0%	Vitamin A, minimum.....	80,000 IU/lb
Potassium, minimum	2.5%	Vitamin D, minimum	8,000 IU/lb
Cobalt, minimum	2.0 ppm	Vitamin E, minimum.....	80 IU/lb

Manufactured By:

Animal Feed Supplement, Inc.

101 Roanoke Avenue

Poteau, Oklahoma 74953

Phone: 800-722-4957

www.feedinadrums.com

CAUTION: Use as directed. Observe livestock and monitor intake daily.

04.29.2010

